



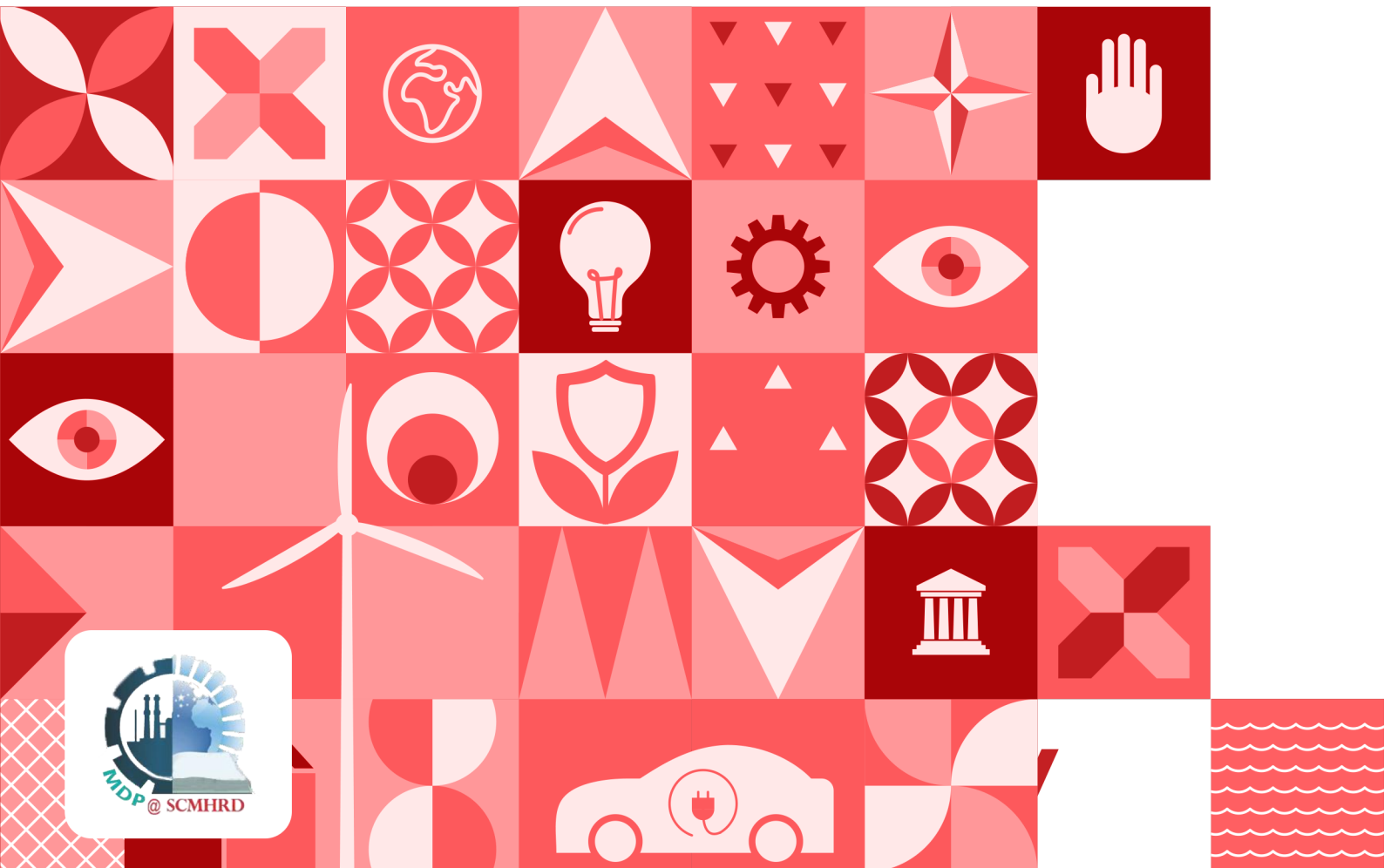
SCMHRD



**AACSB
ACCREDITED**

DRIVING BUSINESS SUSTAINABILITY THROUGH ENVIRONMENTAL, SOCIAL AND GOVERNANCE (ESG) PRACTICES

22nd - 23rd February 2025



ABOUT SCMHRD

Symbiosis Center for Management & Human Resource Development (SCMHRD), established in 1993 is a premier institute shaping world-class leaders and entrepreneurs. Its prestigious MBA program, AACSB accredited, places it among the top 5% of B-Schools globally. Known for academic excellence, SCMHRD develops exceptional talent in HR, Marketing, Finance, Operations, Infrastructure and Business Analytics.

PROGRAM OVERVIEW

The Environmental, Social, and Governance (ESG) Open Program is designed to equip participants with the knowledge and skills to integrate sustainability, ethical practices, and governance principles into organizational strategy and operations. The program's overarching aim is to drive long-term value creation while addressing critical global challenges such as climate change, social equity, and corporate responsibility.

The program explores the environmental dimension by focusing on sustainable resource management, renewable energy, and carbon footprint reduction, helping organizations align with global climate goals. The social aspect delves into fostering inclusive workplaces, ethical supply chain management, and meaningful community engagement, reinforcing a culture of equity and respect. Governance training emphasizes transparency, ethical decision-making, compliance with ESG standards, and building trust through accountability and reporting mechanisms.

With a holistic approach, the program includes interactive workshops, case studies, scenario-based simulations, and practical exercises to ensure participants can effectively apply ESG principles





TOPICS COVERED

1 DAY

INTRODUCTION TO ESG

- Basic definition and overview
- Comparing ESG with CSR
- ESG vs Socially responsible investing (SRI)
- ESG Impact on businesses
- Global landscape

ESG FACTORS


- What are ESG factors and why Businesses need to care about them
- Environmental factors
- Social factors
- Governance factors
- Impact of ESG factors on corporations
- Bridging ESG Factors and Financial Performance
- Bonus - ESG Integration in Practice

2 DAY

ESG FRAMEWORK AND REPORTING

- ESG Reporting Guidelines
- GRI (Global Reporting Initiative)
- CDP (Carbon Disclosure Project)
- SASB (Sustainability Accounting Standards Board)
- TCFD (Taskforce on Climate-related Financial Disclosure)
- WDI (The Workforce Disclosure Initiative)
- CDSB (The Climate Disclosure Standards Board)
- WEF (World Economic Forum Stakeholder Capitalism Metrics)

CHALLENGES AND TRENDS

- Challenges of ESG reporting
 - ESG risks and opportunities
 - Latest trends and way forward
- 





WHO IS IT FOR

Crafted specifically for Corporate Sustainability Officers, Policy Makers, Investment Professionals, and Academicians, this curriculum provides pragmatic ESG implementation frameworks through empirical case studies and sector-specific expertise. Participants acquire experiential knowledge with measurement instruments while cultivating significant networks, thereby empowering them to spearhead sustainable transformation within their respective organizations.

ELIGIBILITY CRITERIA / PRE-REQUISITES

Enthusiasts who are eager to learn and upskill themselves



MESSAGE FROM **DIRECTOR**

In this era of rapid changes, organizations are faced with the steep challenge of trying to cope with the changing circumstances. We at SCMHRD understand this dimensional drift that the organizations are faced with. Hence, it remains our constant endeavour to augment ourselves in being of assistance to organizations at this juncture. Our well rounded strategy of continuous research and industry partnership lays the foundation of our approach to Management Development Programmes.

Dr. Netra Neelam, Director, SCMHRD





KEY TAKEAWAYS



Fundamentals of ESG and its business relevance to drive organizational value and competitive advantage



Develop expertise in environmental, social, and governance frameworks for strategic decision-making



ESG frameworks and reporting standards (GRI, CDP, SASB, etc.) for enhanced stakeholder trust



Identify emerging ESG trends and risk management strategies while capitalizing on sustainable business opportunities



Gain SCMHRD' s prestigious certification, access to industry experts, implementation toolkits, and lifetime membership to our global sustainability network



PROGRAM DATES & DURATION

2 days program on 22nd – 23rd February 2025

PROGRAM FEES

- ▶ **INR 20,000 per participant inclusive of GST**
- ▶ The program sessions will be undertaken in offline mode at SCMHRD, Pune campus
- ▶ This is a non-residential program

SYMBIOSIS INFO TECH CAMPUS

Plot No. 15, Rajiv Gandhi Info Tech Park,
MIDC Hinjawadi, Pune, Maharashtra 411057

mdp@scmhrd.edu

+91-7757033410

Mahesh Renguntwar

✉ head_crt@scmhrd.edu

☎ 7798899722

Ms. Riddhi Vadgama

✉ mdp@scmhrd.edu

☎ 7757033410



SCMHRD



**AACSB
ACCREDITED**